

Touch Panel i18



Advanced seal and touch technology

The Touch Panel i18 is an operator panel with touch function. It will endure the extreme environments within the food and beverage industries and is in general very useful in harsh environments. This high performance Touch Screen Computer is IP69K certified and will therefore withstand high temperature (80°C) washdown as well as high pressure (103 bar) cleaning. The Touch Panel i18 can be cleaned with all typical cleaning agents.

Hygienic and robust

The Touch Panel i18 is designed in compliance with the EN1672-2 guidelines for hygienic design as it has no sharp edges, grooves or joints. The all stainless steel enclosure, the 6 mm (0.24") thick vandal and scratch resistant front, the blue silicone gasket, as well as the Roxtec™ cable glands ensure that it is able to withstand virtually anything. It does not require special care in your cleaning instructions. The cable gland supports multiple cables of different dimensions and with connectors already mounted (see next page). The touch panel is extremely robust and durable but should an accident occur, any component may easily be replaced, including the touch screen. If needed, an extra clear protection front foil can be added to the Touch Panel i18 as an option – mounting or replacement does not require the panel to be opened.

All-in-One

The Touch Panel i18 is a true all-in-one unit. There is no need for a separate power supply or other equipment. The Touch Panel i18 can be ordered as a stand-alone PC or as a monitor (see next page for details). Pre-installed operating systems are available - please contact Frontmatec for more details.

Why the Touch Panel i18!

- IP69K - clean it from any angle at 80°C and 103 bar pressure
- In compliance with EN 1672-2 guidelines for hygienic design
- All-in-One - no extras!
- Use it as an embedded computer or monitor
- Easy installation - simply pull your standard cables through the gland
- Food safe - made of food grade materials
- Chemical resistant - the stainless steel cabinet will withstand virtually any cleaning agents
- Designed for low power consumption
- Any parts can be easily replaced

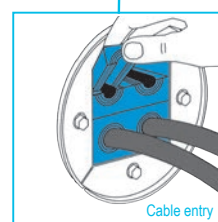
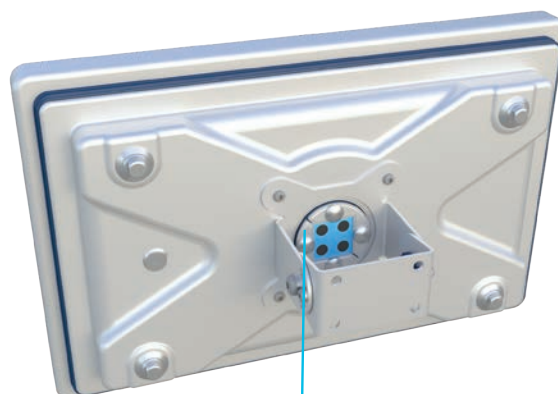


Higher precision and no calibration

In order to obtain a more precise touch function, the LED panel is bonded to the touch sensor thereby reducing the parallax error. Further, the touch panel can be used for gloved operation and the projected capacitive touch does not need to be calibrated, even if replaced.

Reduced complexity

4 COM ports reduce the complexity when interfacing to legacy equipment, like barcode readers, pH meters etc.



Technical specifications

		PC	Monitor
CPU	Type	N4200	-
	Clockspeed	1.1 GHz (2.5 GHz turbo speed)	-
	Cores	4	-
Memory		8 GB	-
Storage		128 GB SSD	-
Display	Type		LED
	Size		18.5"
	Max. resolution		1920x1080 px
Touch	Type		10-point projected capacitive multi touch (PCT)
	Thickness		6 mm
	Front foil		Optional
Interfaces	Ethernet	2x1 Gb	-
	Serial ports	4xRS-232	-
	USB	2xUSB	-
	VGA	-	Optional
	DVI	-	Optional
	HDMI	-	1
Power supply	Supply voltage		100-240VAC
	Power consumption		60W
Cable entry	Cable		4 (6 optional)
Environmental	Ingress protection		IP69K
	Operating temperature		0-45°C (32-113°F) 80°C/30 sec. (176°F/30 sec.)
Dimensions	HxWxD		32.1x50.0x9.4 cm (12.6"x19.7"x3.7")
	Weight		11.2 kg

*Dedicated Ethernet interconnect up to 100 m

Contact

CN: shanghai@frontmtec.com
Phone: +86 215 859 4850

DK: smorum@frontmtec.com
Phone: +45 445 037 00

NL: rijssen@frontmtec.com
Phone: +31 886 294 000

UK: birmingham@frontmtec.com
Phone: +44 121 313 3564

frontmtec.com

DE: luenen@frontmtec.com
Phone: +49 230 675 60680

ES: barcelona@frontmtec.com
Phone: +34 932 643 800

RU: moscow@frontmtec.com
Phone: +7 495 424 9559

US: kansascity@frontmtec.com
Phone: +1 816 891 2440